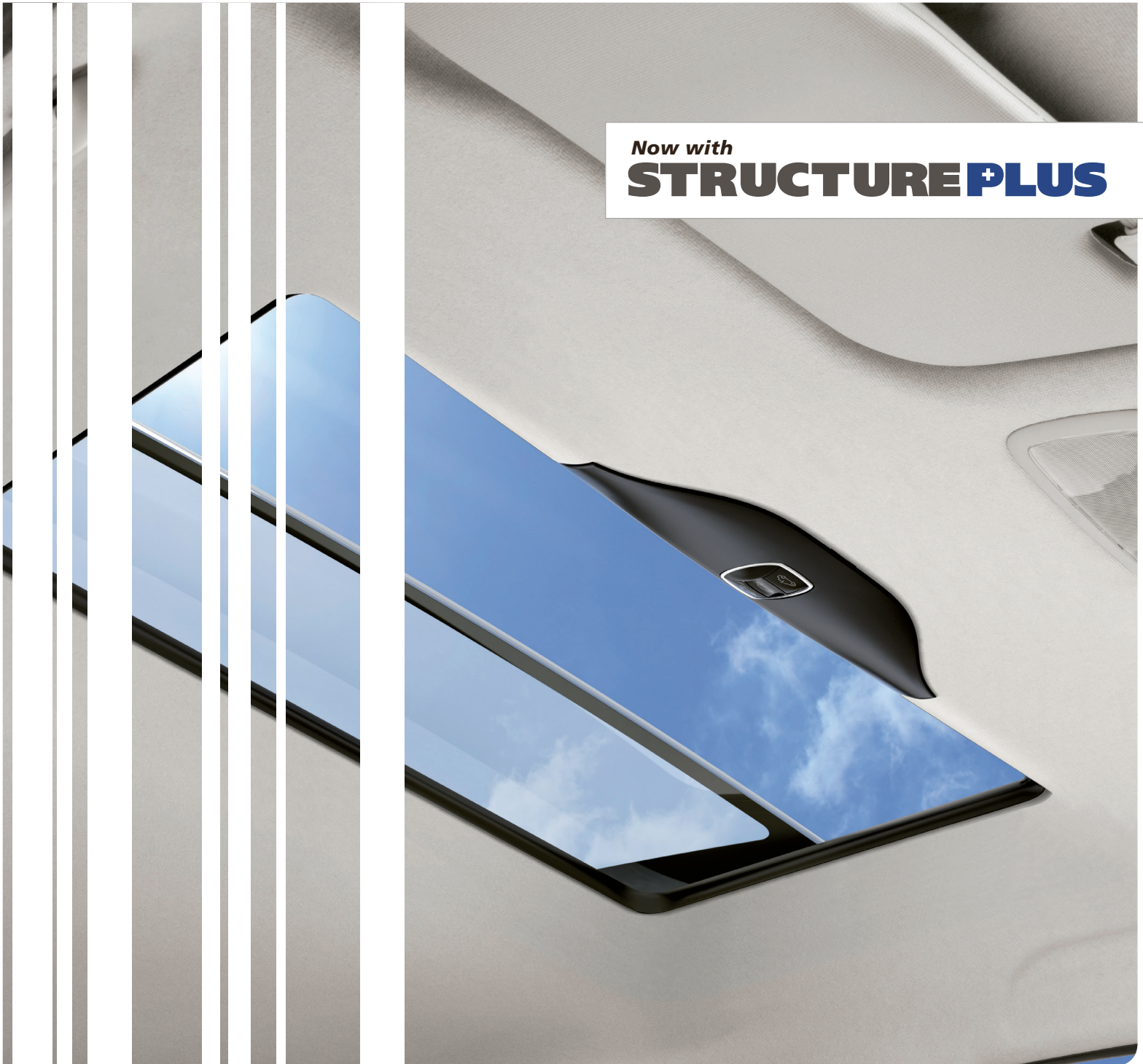


# ALL-NEW | Hollandia 300 NSG

Standard Spoiler Sunroof

Now with  
**STRUCTURE+PLUS**



# The New Spoiler Sunroof | Hollandia 300 NSG

The Hollandia 300 NSG features a large glass panel and sleek profile. The 300 NSG was developed according to OE standards, which will optimize the look of the vehicle interior and exterior to maintain a factory look and feel.

The NSG features pre-assembled components to capitalize on installation time.

The new Hollandia 300 NSG is operated by a sleek switch featured on Webasto's newest models of sunroofs. The interior can be finished with a factory look - via soft wrapping, or with a unique style by covering the interior trim with fabric to match or accent the vehicle interior.

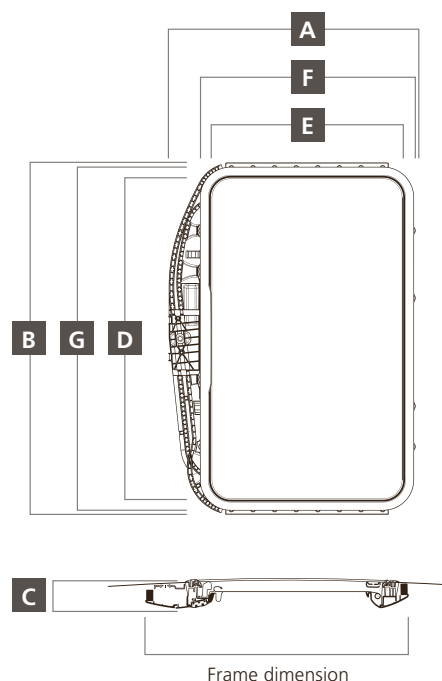
The Hollandia 700-III Comfort is now equipped with Structure Plus. Structure Plus is designed to ensure proper function and strength in all approved Webasto sunroof installations. The additional structure and specific design make Webasto sunroofs with Structure Plus the strongest aftermarket sunroofs in Webasto's portfolio.

## Product Features

- Interior trimshell can be color matched to interior
- Option of covering the trimshell with individual fabric as per customer wishes
- Switch offered in black with chrome trim, available in a choice of four LED lighting colors (Comfort version)
- Rollo Sunshade (Comfort version)
- Wind Deflector (Comfort version)
- Soft-Touch / Auto Close (Comfort version)

## Measurements and Dimensions

Dimensions	
A	22.4 in (568.8 mm)
B	32.1 in (814 mm)
C	2.3 in (60 mm)
D	29.5 in (748 mm)
E	17.7 in (448 mm)
F	19.5 in (494 mm)
G	31.2 in (794 mm)
R (X)	216.5 in (5,500 mm)
R (Y)	233.9 in (6,500 mm)
Visible glass aperture without rollo sunshade	13.8 x 23.6 in (350 x 600 mm)
Visible glass aperture with rollo sunshade	13 x 23.6 in (330 x 600 mm)
Sliding aperture	9 x 23.6 in (230 x 600 mm)
Frame dimensions (drive at the front)	24 x 33.4 in (609 x 848 mm)
Frame dimensions (drive at the rear)	24.9 x 33.4 in (630 x 848 mm)



\*To provide for optimal positioning, the NSG can be delivered with the motor in the front or rear part of the frame component. The dimensions of the spoiler roof are identical in both versions.

\*\*Structural integrity is significantly increased with the addition of Structure Plus.

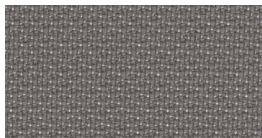
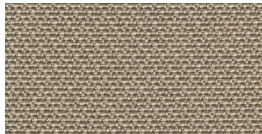
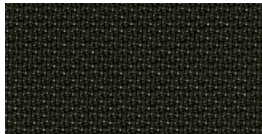
All SolAire and Hollandia aftermarket sunroof product lines have been tested and meet or exceed the applicable U.S. Federal Motor Vehicle Safety Standards (FMVSS) and Regulations.

## Choose your interior look.



### Entry version

- Interior Trimshell – Pre-covered with grey fabric headliner
- Switch offered in black without back lighting



### Comfort version

- Interior Trimshell - black plastic ready for fabric covering
- Switch offered in black with chrome trim, available in a choice of four LED lighting colors
- Rollo Sunshade
- Wind Deflector
- One-touch/Auto-Close



*\*Commonly used headliner options shown above*

## Beautiful exterior look.

The Hollandia 300 NSG has been designed to blend near-seamlessly into today's vehicle roof lines. The front-to-rear and side-to-side curvature matches more closely than any previous model sunroof and the low-profile trim ring marries the roof design to the glass panel.



# Top Quality + Manufacturing

The Hollandia 300 NSG is manufactured on a semi-automated and efficient production line with error-proof control measures, leading to a top quality product built to OEM standards.



Spoiler sunroofs are popular, with compact dimensions, the Hollandia 300 NSG offers a large opening and straight-forward installation, and in some cases, does not require interference with the car's original roof stiffener. However, for added safety, when the removal is required, Webasto has developed a worry-free and safe alternative called a Roof Stiffener Replacement (RSR) - the Industry's most comprehensive solution.



Each Hollandia 300 NSG roof is programmed and tested before leaving the factory, ending with a 100% end-of-the-line check - testing includes basic functionality, leakage and anti-pinch.



The Hollandia 300 NSG offers an industry leading 10-year / 100,000 mile limited parts warranty to the original owner.

Webasto Thermo & Comfort  
North America, Inc.  
15083 North Road  
Fenton, Michigan 48430  
USA

Toll Free: 800-860-7866  
Phone: 810-593-6000  
Fax: 810-593-6001



[www.webastosunroofs.com](http://www.webastosunroofs.com)

*The world's largest manufacturer of OEM and Aftermarket sunroofs*